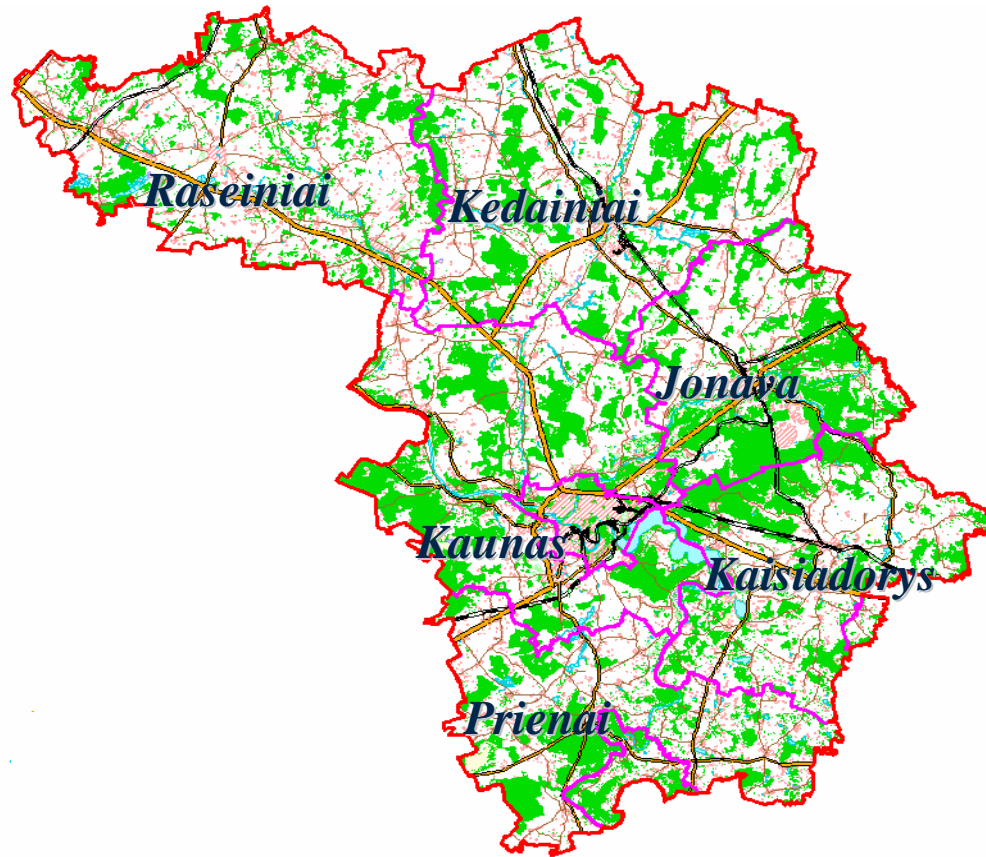


# MAP OF LITHUANIA



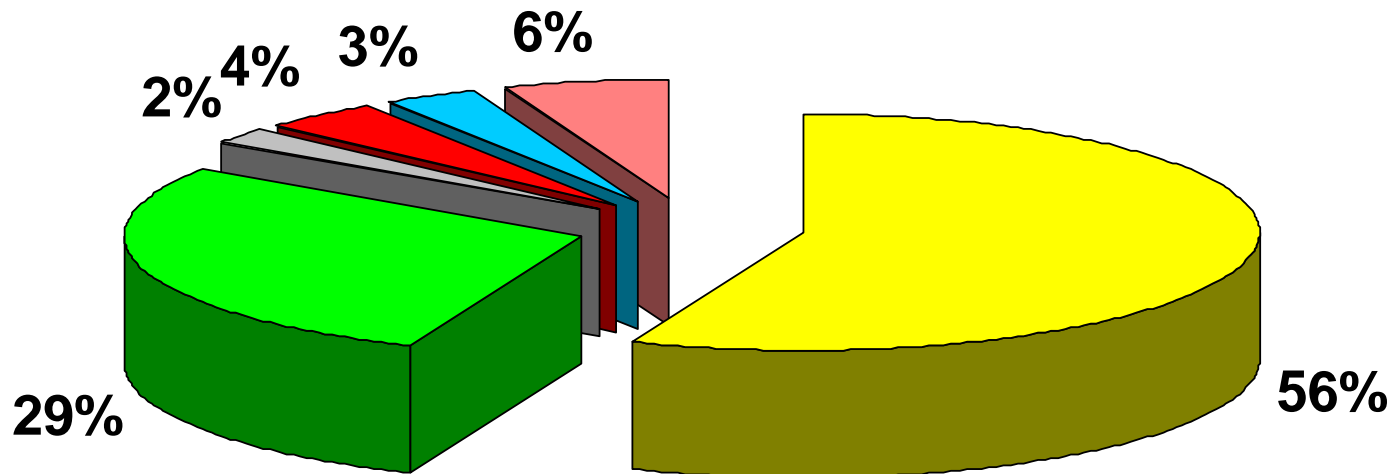
- ❖ *Area: 65,303 km<sup>2</sup>*
- ❖ *Population: ~3,48 mln.*
- ❖ *The total area of Lithuania is divided into 10 counties .*
- ❖ *Counties consist of territories of 10 cities and 51 regional municipalities.*

# KAUNAS COUNTY



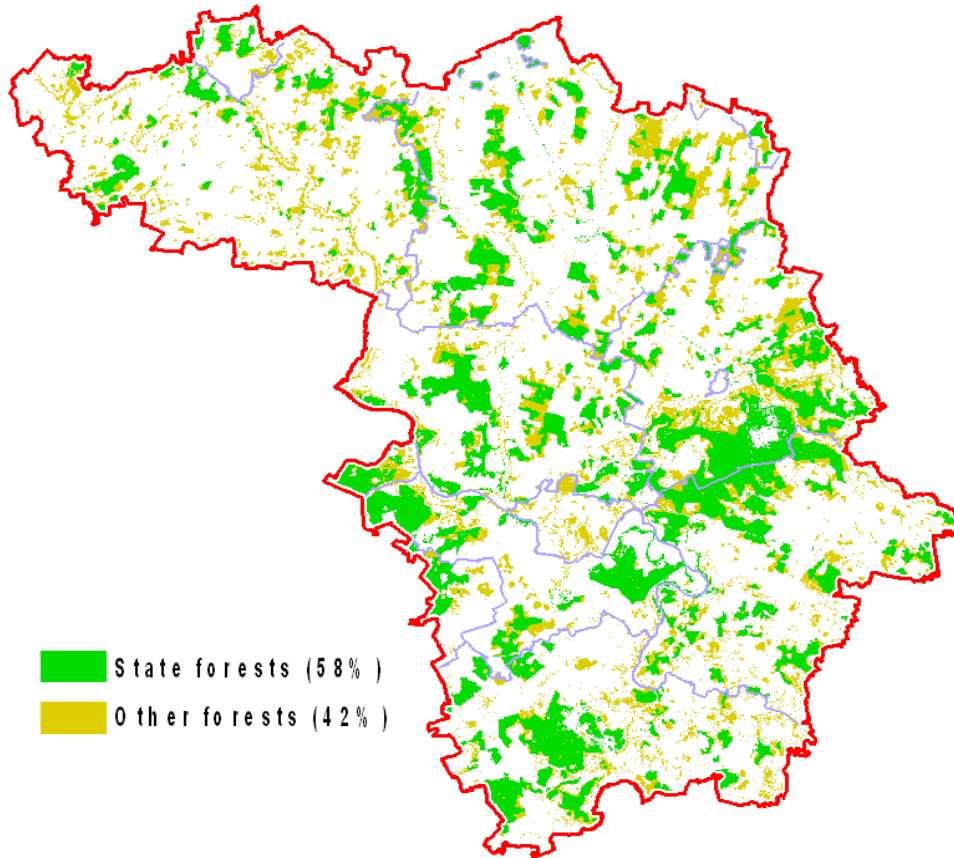
- ❖ *Kaunas county is the central county in the country. It is the geographical, educational, as well as industrial and transport centre of Lithuania.*
- ❖ *The county covers the area of 809,000 ha (12% of total Lithuania's territory), and its population numbers 703,200 .*
- ❖ *The territory of Kaunas county is divided into 6 municipalities.*
- ❖ *Kaunas with population over 400,000 is the second largest city of Lithuania.*

# LAND FUND BY LAND-USE CATEGORIES



- ❖ *Total land area is 808,900 hectares.*
- ❖ *Disturbed and no used land covers 27,400 hectares.*

# FOREST IN KAUNAS COUNTY



- ❖ 29,1 % of the county area is covered by forests.
- ❖ Forest land area is 238,700 ha.
- ❖ Forest stands area is 226,400 ha.
- ❖ Growing stock volume is 45 million  $m^3$ .
- ❖ Average growing stock volume – 201  $m^3$ /ha.
- ❖ Mean current annual increment is 6.5  $m^3$ /ha.